



# CONIX RDBM ARCHITECTS

CONIX RDBM was established in 2013 as the joint forces of Conix Architects (founded in Wilrijk in 1979) and RDBM Architects & Advisors. The team describes its approach as being "continuously in motion and driven by emotions," with an emphasis on the multiple meanings of the word 'motion', such as 'evolution', 'innovation' and 'inspiration'. With offices in Antwerp and Brussels as well as in Rotterdam and Terneuzen, the practice is managed by Christine Conix, Jorden Goossenaerts, and Frederik Jacobs. The team's ultimate goal is to design functional, flexible, and aesthetic architecture, developing buildings that offer an added value to their users as well as to society both today and in the future.

They describe their mission as "Continuously in motion and driven by emotions," with an emphasis on the multiple meanings of the word 'motion', such as 'evolution', 'innovation' and 'inspiration'. CONIX RDBM was established in 2013 as the joint forces of Conix Architects (founded in Wilrijk in 1979) and RDBM Architects & Advisors. With offices in Antwerp and Brussels as well as in Rotterdam and Terneuzen, the practice is managed by Christine Conix, Jorden Goossenaerts, and Frederik Jacobs. The team's ultimate goal is to design functional, flexible, and aesthetic architecture, developing buildings that offer an added value to their users as well as to society both today and in the future.

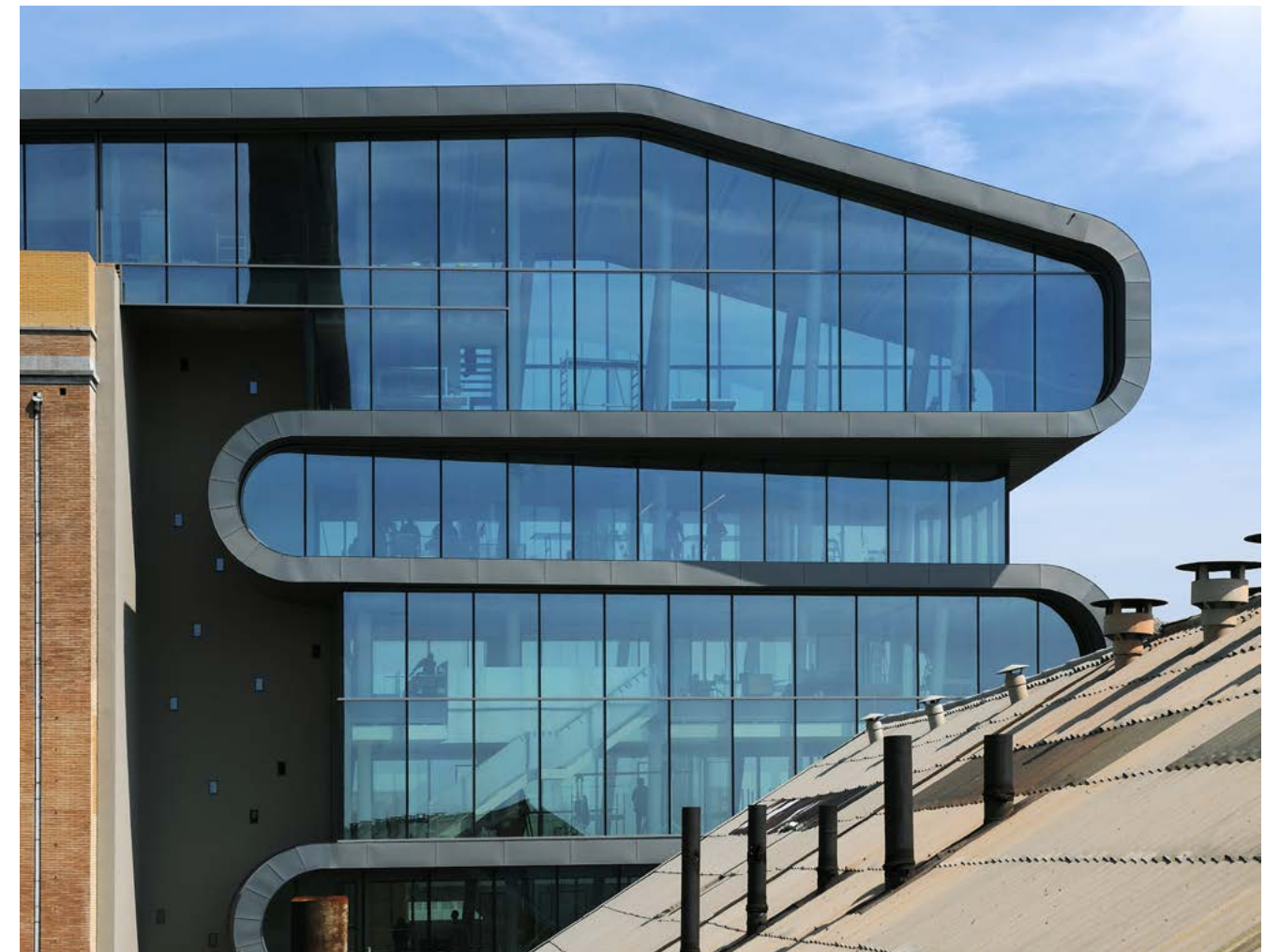
They describe their mission as "Continuously in motion and driven by emotions," with an emphasis on the multiple meanings of the word 'motion', such as 'evolution', 'innovation' and 'inspiration'. CONIX RDBM was established in 2013 as the joint forces of Conix Architects (founded in Wilrijk in 1979) and RDBM Architects & Advisors. With offices in Antwerp and Brussels as well as in Rotterdam and Terneuzen, the practice is managed by Christine Conix, Jorden Goossenaerts, and Frederik Jacobs. The team's ultimate goal is to design functional, flexible, and aesthetic architecture, developing buildings that offer an added value to their users as well as to society both today and in the future.

## Umicore, Hoboken, Belgium, 2009

The project combined a masterplan for a post-industrial site, a renovation of historical architecture, and the design of a new office building. In stark contrast to the rest of the complex, the futuristic volume zigzags expressively up from the entrance to the very top.

The project combined a masterplan for a post-industrial site, a renovation of historical architecture, and the design of a new office building. In stark contrast to the rest of the complex, the futuristic volume zigzags expressively up from the entrance to the very top.

The project combined a masterplan for a post-industrial site, a renovation of historical architecture, and the design of a new office building. In stark contrast to the rest of the complex, the futuristic volume zigzags expressively up from the entrance to the very top.





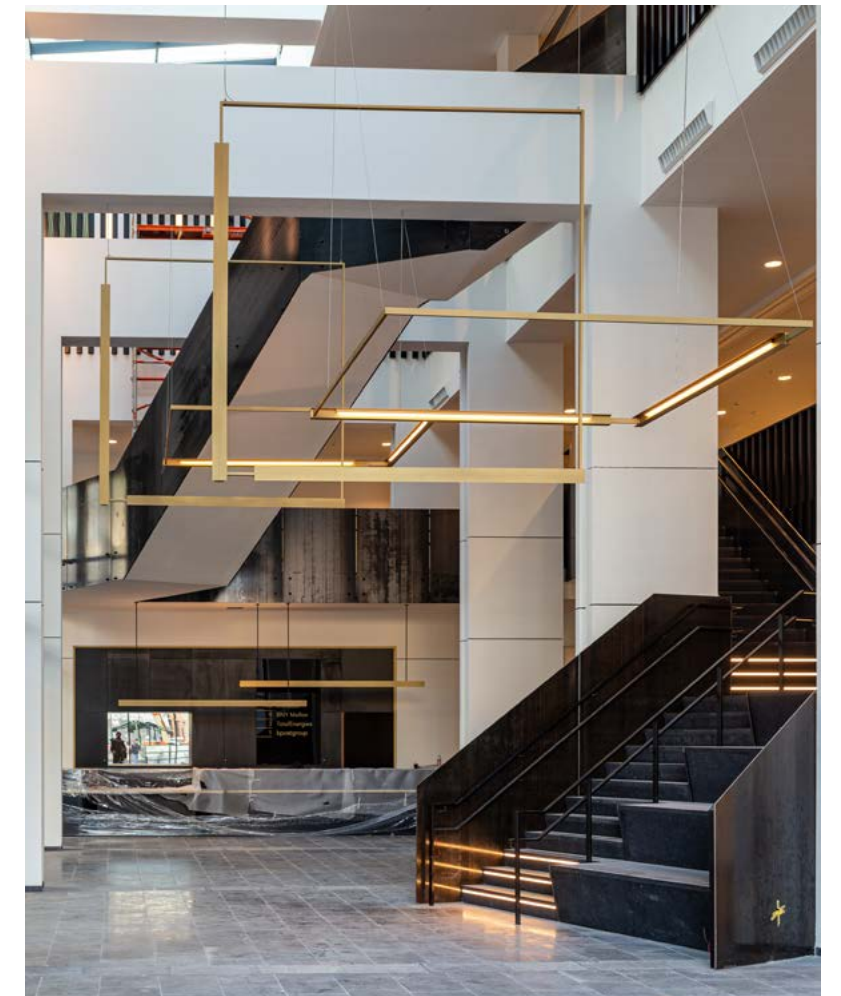


### Multi-Tower, Brussels, Belgium, 2020

The architects call this carbon-neutral high-rise a “transformation of a blockage into an urban space changer.” The focus of the renovation of the old De Brouckère tower was a circular construction, so the new, transparent complex is made of 89% reused building materials.

The architects call this carbon-neutral high-rise a “transformation of a blockage into an urban space changer.” The focus of the renovation of the old De Brouckère tower was a circular construction, so the new, transparent complex is made of 89% reused building materials.

The architects call this carbon-neutral high-rise a “transformation of a blockage into an urban space changer.” The focus of the renovation of the old De Brouckère tower was a circular construction, so the new, transparent complex is made of 89% reused building materials.





**Zurenborg Poort, Antwerp, Belgium, 2021**

This new apartment building with a green courtyard and communal roof terrace was envisioned to be in visual harmony with the context of the historical district. The construction draws from Art Deco traditions, while the use of colours and material was inspired by Art Nouveau. .

This new apartment building with a green courtyard and communal roof terrace was envisioned to be in visual harmony with the context of the historical district. The construction draws from Art Deco traditions, while the use of colours and material was inspired by Art Nouveau.

This new apartment building with a green courtyard and communal roof terrace was envisioned to be in visual harmony with the context of the historical district. The construction draws from Art Deco traditions, while the use of colours and material was inspired by Art Nouveau.

